

E.C.N.	REV.	DESCRIPTION	DATE	BY	CHKD.	APP'D.
J0444-0A	0	CREATED CHANNEL 2 ON SHEET 3 OF 3	4-1-91	LCD		

**COMMON**

LAST USED	OBSOLETE
CB	CB
DB	
EB	
FB	
GB	
HB	
IB	
LB	
MB	

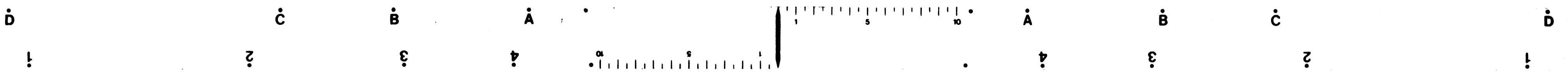
**CHANNEL 1**

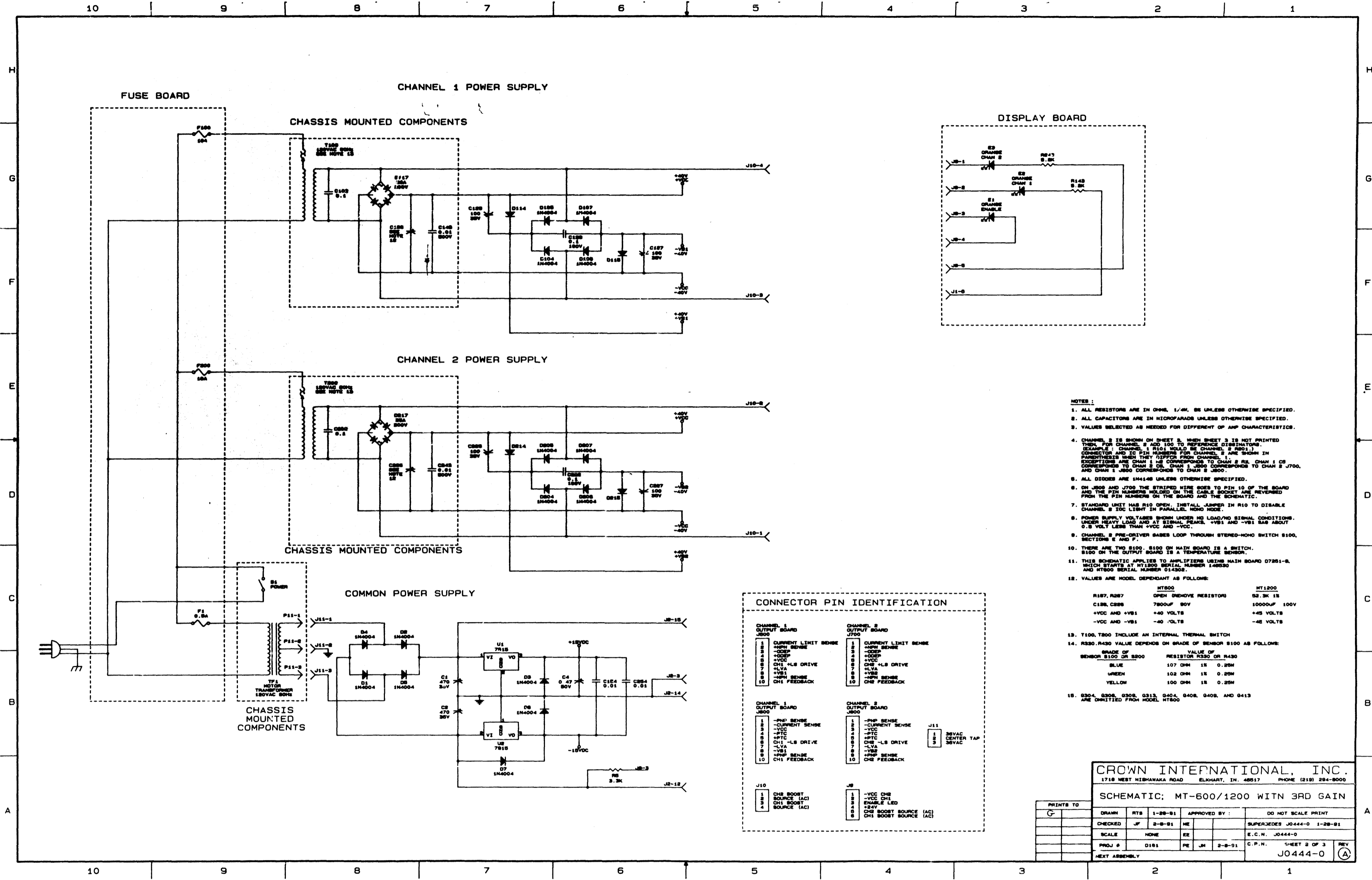
LAST USED	OBSOLETE
C103	C107, 109-111, 119-121, 129, 131, 132, 142
C309	C300
D124	D100-103, 116, 118, 119
D312	D300
L302	
PTC301	
Q122	Q114
Q316	Q300
R127	R143-145, 154, 156, 160, 163-166, 173, 177, 178, 184
R340	R329, 331-334
U101	U101, 102

**CROWN INTERNATIONAL, INC.**  
 1718 WEST WISHANAKA ROAD ELKHART, IN. 46517 PHONE (219) 294-8000

**SCHEMATIC: MT-600/1200 WITH 3RD GAIN**

PRINTS TO	DATE	BY	APPROVED BY	DO NOT SCALE PRINT
G	1-28-91	RTS		
CHECKED	2-8-91	HE		SUPERSEDES J0444-0 1-28-91
SCALE	NONE	EE		E.C.N. J0444-0
PROJ. #	D149	PE	JM	C.P.N. SHEET 1 OF 3
NEXT ASSEMBLY				J0444-0 (A)





- NOTES:**
1. ALL RESISTORS ARE IN OHMS, 1/4W, 5% UNLESS OTHERWISE SPECIFIED.
  2. ALL CAPACITORS ARE IN MICROFARADS UNLESS OTHERWISE SPECIFIED.
  3. VALUES SELECTED AS NEEDED FOR DIFFERENT AMP CHARACTERISTICS.
  4. CHANNEL 2 IS SHOWN ON SHEET 3. WHEN SHEET 3 IS NOT PRINTED THEN FOR CHANNEL 2 ADD 100 TO REFERENCE DESIGNATORS. (EXAMPLE: CHANNEL 1 R101 SHOULD BE CHANNEL 2 R201.) CONNECTOR AND IC PIN NUMBERS FOR CHANNEL 2 ARE SHOWN IN PARENTHESES. (EXAMPLE: J101 SHOULD BE CHANNEL 2 J201.) COMPONENTS ARE SHOWN IN CORRESPONDENCE TO CHANNEL 1 OR CHANNEL 2 UNLESS OTHERWISE SPECIFIED TO CHANNEL 1 OR CHANNEL 2.
  5. ALL DIODES ARE 1N4004 UNLESS OTHERWISE SPECIFIED.
  6. ON J100 AND J105 THE STRIPED WIRE GOES TO PIN 10 OF THE BOARD AND THE PIN NUMBERS MOLDED ON THE CABLE SOCKET ARE REVERSED FROM THE PIN NUMBERS ON THE BOARD AND THE SCHEMATIC.
  7. STANDARD UNIT HAS R10 OPEN. INSTALL .47MΩ IN R10 TO DISABLE CHANNEL 2 IDC LIGHT IN PARALLEL. MONO MODE.
  8. POWER SUPPLY VOLTAGES SHOWN UNDER NO LOAD/NO SIGNAL CONDITIONS. UNDER HEAVY LOAD AND AT SIGNAL PEAKS, +VBS AND +VBI MAY BE ABOUT 0.5 VOLT LESS THAN +VCC AND -VCC.
  9. CHANNEL 2 PRE-DRIVER BIAS LOOP THROUGH STEREO-MONO SWITCH R100, RESISTORS E AND F.
  10. THERE ARE TWO R100, R100 ON MAIN BOARD IS A SWITCH. R100 ON THE OUTPUT BOARD IS A TEMPERATURE SENSOR.
  11. THIS SCHEMATIC APPLIES TO AMPLIFIERS USING MAIN BOARD 07261-B WHICH STARTS AT MT1200 SERIAL NUMBER 146530 AND MT600 SERIAL NUMBER 014325.
  12. VALUES ARE MODEL DEPENDENT AS FOLLOWS:
 

	MT600	MT1200
R187, R287	OPEN (REMOVE RESISTOR)	82.3K Ω
C126, C226	7800UF 50V	10000UF 100V
+VCC AND +VBI	+40 VOLTS	+45 VOLTS
-VCC AND -VBI	-40 VOLTS	-45 VOLTS
  13. T100, T200 INCLUDE AN INTERNAL THERMAL SWITCH. R100 ON THE OUTPUT BOARD IS A TEMPERATURE SENSOR.
  14. R330, R430 VALUE DEPENDS ON GRADE OF SENSOR R100 AS FOLLOWS:
 

GRADE OF SENSOR R100 OR R200	VALUE OF RESISTOR R330 OR R430
BLUE	107 OHM 1% 0.25W
GREEN	102 OHM 1% 0.25W
YELLOW	100 OHM 1% 0.25W
  15. 0304, 0306, 0308, 0313, 0404, 0408, 0409, AND 0413 ARE OMITTED FROM MODEL MT600.

**CONNECTOR PIN IDENTIFICATION**

CHANNEL 1 OUTPUT BOARD (J10)	CHANNEL 2 OUTPUT BOARD (J10)
1 -PSP SENSE	1 -PSP SENSE
2 -CURRENT SENSE	2 -CURRENT SENSE
3 +VCC	3 +VCC
4 -VCC	4 -VCC
5 -VBI	5 -VBI
6 -VBS	6 -VBS
7 -LVA	7 -LVA
8 -LVB	8 -LVB
9 -PSP SENSE	9 -PSP SENSE
10 -CH1 FEEDBACK	10 -CH2 FEEDBACK

CHANNEL 1 OUTPUT BOARD (J10)	CHANNEL 2 OUTPUT BOARD (J10)
1 -PSP SENSE	1 -PSP SENSE
2 -CURRENT SENSE	2 -CURRENT SENSE
3 +VCC	3 +VCC
4 -VCC	4 -VCC
5 -VBI	5 -VBI
6 -VBS	6 -VBS
7 -LVA	7 -LVA
8 -LVB	8 -LVB
9 -PSP SENSE	9 -PSP SENSE
10 -CH1 FEEDBACK	10 -CH2 FEEDBACK

J11
1 35VAC
2 35VAC

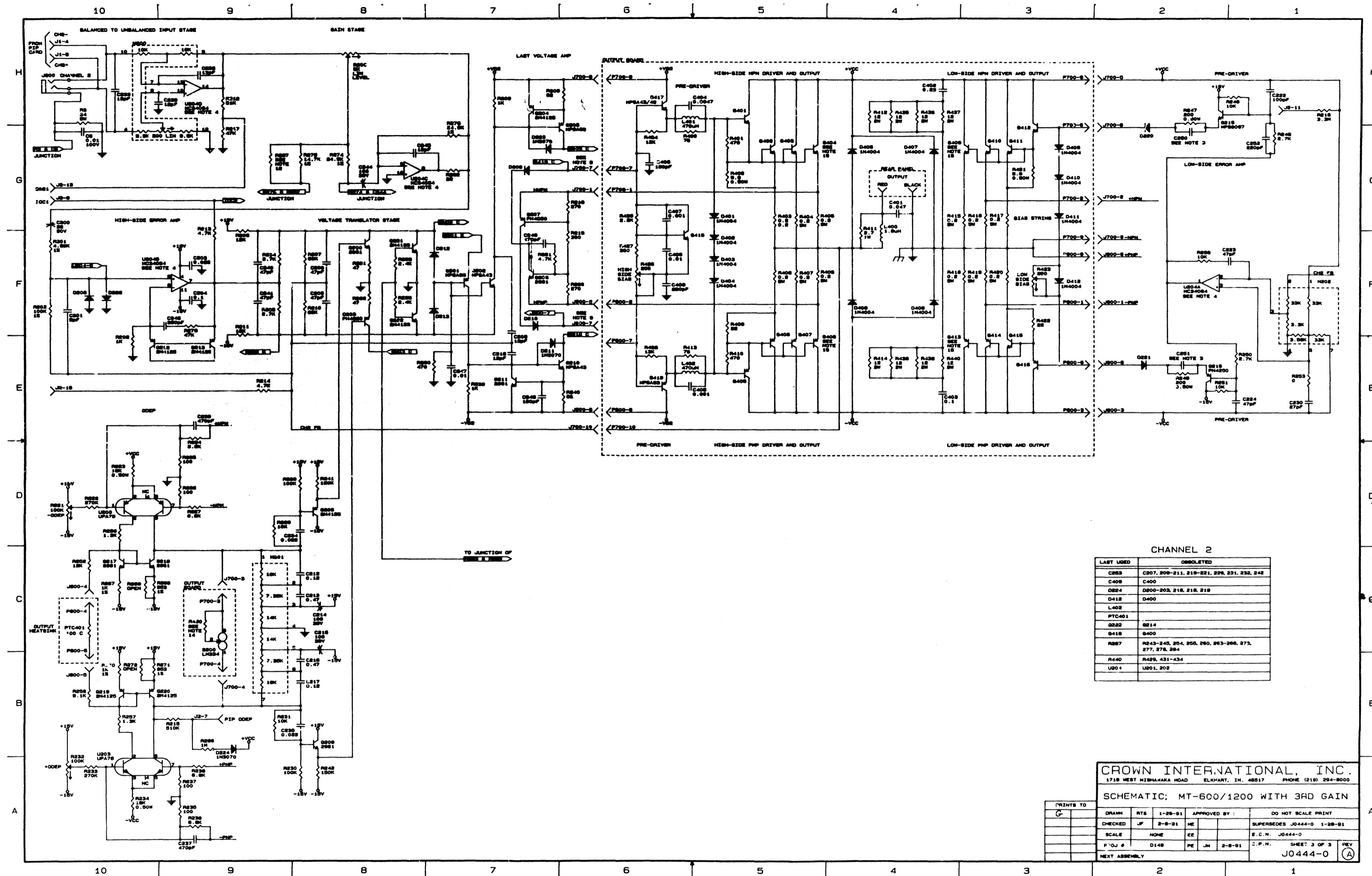
J12
1 -VCC CH2
2 -VCC CH1
3 ENABLE LED
4 25V
5 CH2 BOOST SOURCE (AC)
6 CH1 BOOST SOURCE (AC)

**CROWN INTERNATIONAL, INC.**  
 1718 WEST HIGHWAY ROAD ELKHART, IN. 46517 PHONE (219) 294-8000

**SCHEMATIC: MT-600/1200 WITH 3RD GAIN**

PRINTS TO	
DRAWN	MTS 1-28-81
CHECKED	JF 2-9-81
SCALE	NONE
PROJ #	D181
NEXT ASSEMBLY	

APPROVED BY:	DO NOT SCALE PRINT
SUPERSEDES J0444-0 1-28-81	
E.C.H. J0444-0	
C.P.N. SHEET 2 OF 3	
J0444-0	REV (A)



CHANNEL 2

LAST USED	OBSOLETE
C823	C807, 209-211, 218-221, 229, 231, 232, 242
C409	C400
D824	D200-202, 216, 218, 219
D412	D400
L402	
PTC401	
Q222	Q214
Q418	Q400
R827	R243-245, 254, 255, 256, 263-266, 273, 277, 278, 284
R440	R429, 431-434
U204	U201, 202

CROWN INTERNATIONAL, INC.  
1718 WEST HISHAHARA ROAD ELKHART, IN. 46517 PHONE (219) 294-8000

SCHEMATIC; MT-600/1200 WITH 3RD GAIN

PRINTS TO	DATE	BY	APPROVED BY	DO NOT SCALE PRINT
CHECKED	JF	2-8-81	HE	SUPERSEDES J0444-0 1-28-81
SCALE	NONE	EE		E.C.N. J0444-0
FIG. #	D148	PE	JH	2-8-81
NEXT ASSEMBLY				C.P.N. SHEET 3 OF 3 REV J0444-0