

Technical Manual



JBL EON210P/230

SPECIFICATIONS

ACOUSTIC & ELECTRICAL SPECIFICATIONS:

- System Power Rating: 300W (2 x 150 Stereo)
- Frequency Response: 75 Hz – 19 kHz (± 3 dB)
- Frequency Range: 60Hz – 20kHz (-10 dB)
- Maximun Peak Output: 124dB peak system output (pink noise)
- Input Impedance:
 - Ch1-4 Combo: XLR 3k ohms Balanced
 - Ch1-4 Combo: TRS 20k ohms Balanced
 - Ch 5-6: TRS 25k ohms Balanced
 - Ch 5-6: RCA 12k ohms Unbalanced
 - Ch 7-8: 3.5mm 30k ohms Unbalanced
- Crossover Frequency: 2 kHz

SYSTEM COMPONENTS:

- Cabinet: Enclosure (Not for Sale)
- Grille Assembly: 364866-001
- Low Frequency Transducer: 328H 250mm (10 in) woofer
- DC Resistance: 5.8 ohm $\pm 10\%$
- High Frequency Transducer: 2414H-1 37.5mm (1.5 in) annudi aphafragm, neodymium compression driver
- DC Resistance: 3.60 ohm $\pm 0.2\%$

SYSTEM COMPONENTS: (CONT'D)

- Crossover Network: 444944-001

AURAL SWEEP TEST SPECIFICATIONS:

- A. System Aural Sweep Test: 3.5V Input, 70 Hz to 20 kHz
- B. L.F. Aural Sweep Test: 10V Input, 20 Hz to 2 kHz
- C. H.F. Aural Sweep Test: .75V Input, 500 Hz to 1.5 kHz

PHYSICAL SPECIFICATIONS:

- Shipping Package: 546 x 660 x 349 mm D (21.5 x 26 x 13.75 in. D)
- Net Weight of System: 33 lbs. (19 lbs. for unit with powered mixer, 14 lbs. for unit with storage pod)

WARRANTY INFORMATION:

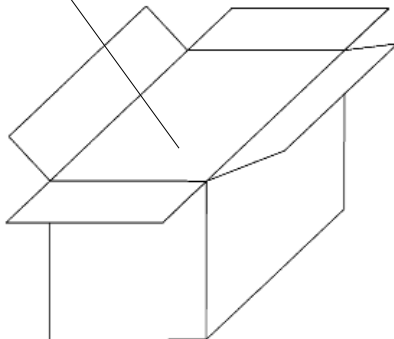
- Refer to Warranty Statement packed with each product.

PACKAGE

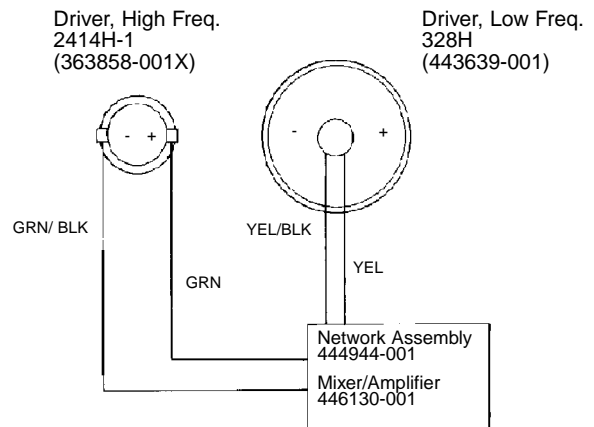
Warranty 59660

Users Guide
445709-001

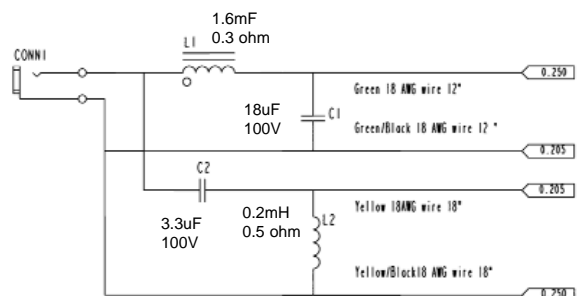
- Outer Carton 445369-001
- Filler, Top/Bottom (2) 445366-001
- Inner Box 445708-001
- Inner Box Sheet (2) 445367-001
- Filler, Middle 445370-001
- Storage Liner 445511-001
- Insert (2) 365433-001
- Speaker Cable Wire 445371-001
- CORD, AC, LINE, 425-00000-00 (120)
- 425-00000-01 (230)



WIRING DIAGRAM



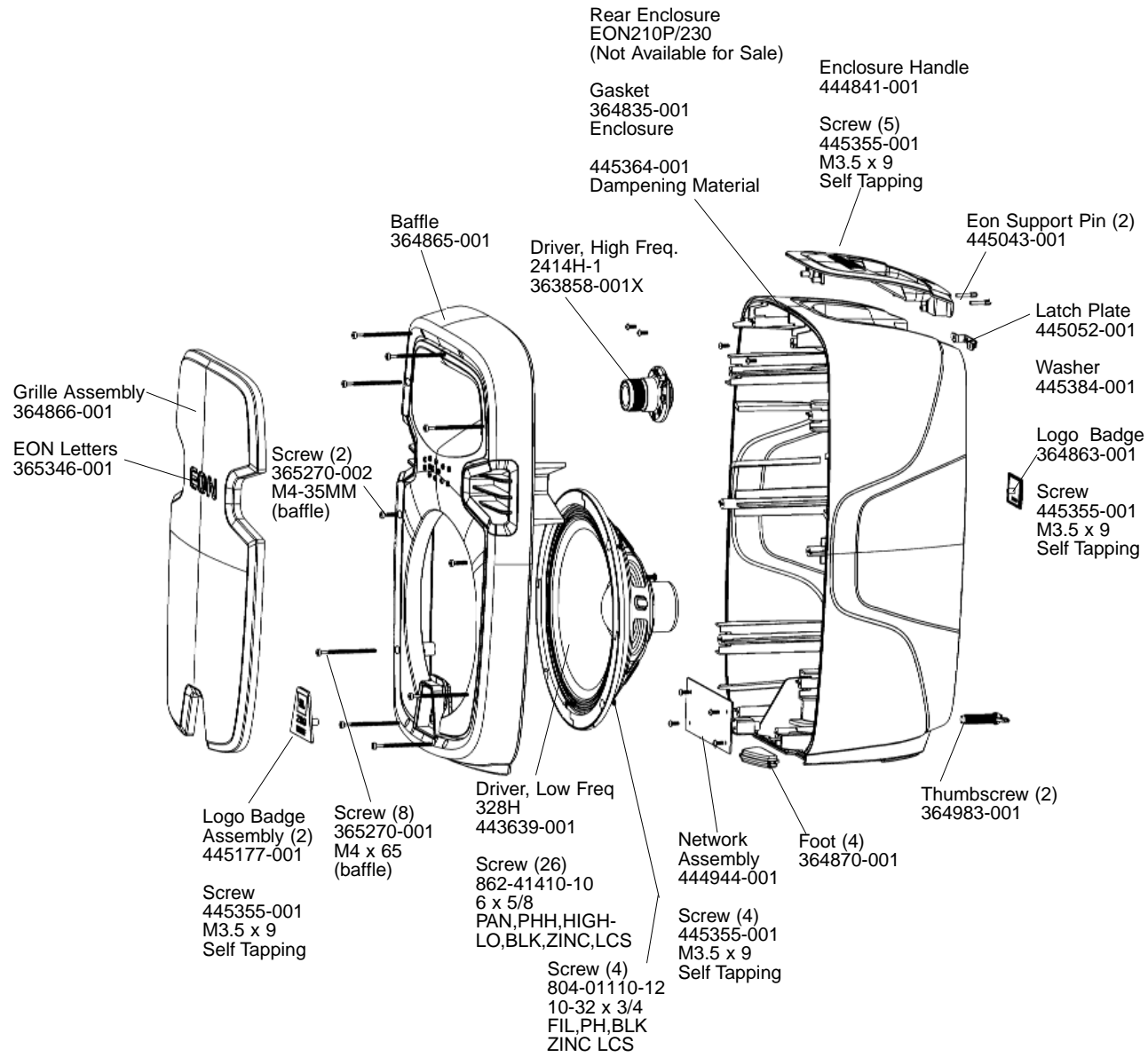
NETWORK SCHEMATIC - 444944-001



JBL EON210P/230 REV B

JBL EON210P/230

COMPONENT EXPLODED VIEW



JBL EON210P/230

JBL EON210P/230

POWERED MIXER EXPLODED VIEW

Mixer / Amplifier Assembly
446130-001

Screw (5)
445355-002
M3.5 x 15
Self Tapping

Mixer
Release
Button
444844-001

Mixer
Release
Cover
444843-001

Screw (2)
445362-001
M3 x 5
Flat Self Tapping

Spring
445361-001
25.4MM

Latch Hook
445051-001

Foot, Right (2)
444847-001

Bezel
444846-002

Logo Badge
364863-001

Mixer Enclosure
(Not Available For
Sale)

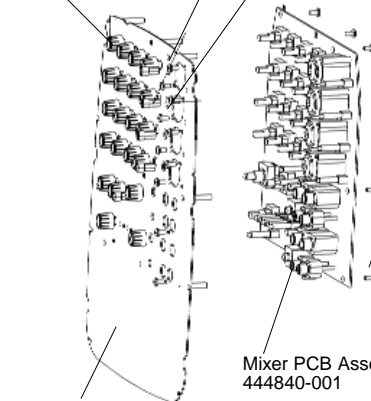
MIXER PLATE ASSEMBLY EXPLODED - 445879-001

Amplifier
Assembly
445356-001

Screw (10)
445362-002
M3 x 7
FLT Self Tapping

Knob (21) Push Button (5)
445045-001 445175-001

Screw (10)
445881-001
M3 x 6.5
Self Tapping
Mix Plate to XLR



Screw (7)
445880-001
M3 x
3.5MM
Machine
Mix Board
to Mix Plate

Mixer PCB Assembly
444840-001

Mixer Plate Assembly
444850-001

Screw (12)
365270-003
M4-12MM
Baffle

Mixer Plate
444850-001

Screw (8)
445355-002
M3.5 x 15
Self Tapping

Output Jack (2)
445363-001

Voltage
Selector
445360-001

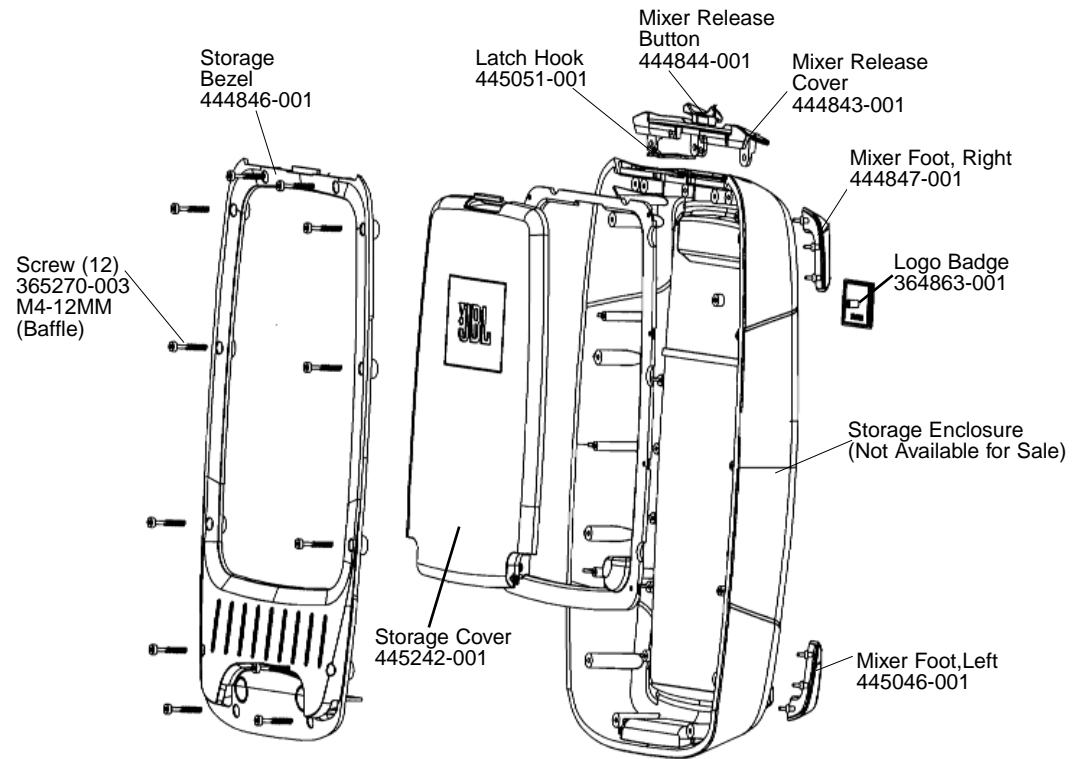
AC Inlet
Connector
365428-001

Foot, Left (2)
445046-001

JBL EON210P/230

JBL EON210P/230

STORAGE POD EXPLODED VIEW



JBL EON210P/230